

# CHAMOT

## Recombinant Human IL-28 B

CM033-5HP  
CM033-20HP  
CM033-100HP  
CM033-500HP  
CM033-1000HP



CHAMOT

喬默生物技術(上海)有限公司  
CHAMOT BIOTECHNOLOGY CO., LTD.

# CONTENT

**1** 产品简介

**2** 产品组成

**3** 产品储存

**4** 产品使用

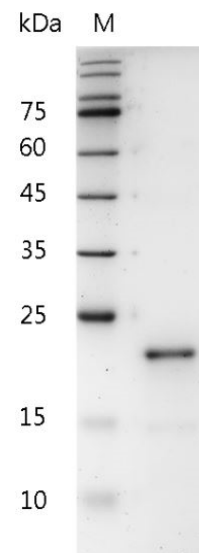
## Recombinant Human IL-28 B (Interleukin-28 B)

|     |   |     |   |
|-----|---|-----|---|
| 编号: | CM033-5HP<br>CM033-20HP<br>CM033-100HP<br>CM033-500HP<br>CM033-1000HP | 规格: | 5 µg<br>20 µg<br>100 µg<br>500 µg<br>1 mg |
| 类别: | 重组蛋白  | 应用: | Functional Assay                          |

### 产品简介

**描述:** Interleukin-28 (IL-28) is a cytokine that comes in two isoforms, IL-28A and IL-28B, and plays a role in immune defense against viruses, including the induction of an "antiviral state" by turning on Mx proteins, 2',5'-oligoadenylate synthetase as well as ISGF3G (Interferon Stimulated Gene Factor 3). IL-28A and IL-28B belong to the type III interferon family of cytokines and are highly similar (in amino acid sequence) to IL-29. Their classification as Interferons is due to their ability to induce an antiviral state, while their additional classification as cytokines is due to their chromosomal location as well as the fact that they are encoded by multiple exons, as opposed to a single exon, as most type-I IFNs are.

**来源:** *Escherichia coli*  
**纯度:** >95% as determined by SDS-PAGE.  
 Ni-NTA chromatography  
**生物学活性:** Measure by its ability to protect HepG2 cells infected with encephalomyocarditis (EMC) virus. The ED<sub>50</sub> for this effect is < 5 ng/mL.



SDS-PAGE analysis of recombinant human IL-28 B

内毒素检测: < 0.01 EU per 1 µg of the protein by the LAL method.

蛋白序列: MVPVARLRGALPDARGCHIAQFKSLS  
 PQELQAFKRAKDALEESLLKDKCRS  
 RLFPRTWDLRQLQVRERPVALEAELAL  
 TLKVL EATADTD PALGDVLDQPLHTL  
 HHILSQLRACIQPQPTAGPRTRGRLH  
 HWLHRLQEAPKKESPGCLEASVTFNL  
 FRLTRDLN CVASGDL CV with  
 polyhistidine tag at the C-terminus

## 产品组成

成分: 从含有 1X PBS, pH 8.0 溶液中冻干的蛋白质.

## 产品储存/运输

| 产品形式      | 储存温度        | 储存时间     |
|-----------|-------------|----------|
| 冻干粉       | -20°C至-80°C | 自收到之日起1年 |
| 重悬液 (初始)  | 2°C至8°C     | 不超过1周    |
| 重悬液 (经稀释) | -20°C至-80°C | 3到6个月    |

运输方式: 蓝冰

## 产品使用

- 1、开盖前，建议3000-3500rpm离心5min。
- 2、推荐使用无菌水重悬冻干粉，溶液浓度不低于100µg/mL，不高于1mg/mL，并室温静置至少20min以充分溶解。勿涡旋剧烈振荡。
- 3、重悬后的溶液，2 -8°C无菌保存不超过1周。
- 4、如需长期保存，推荐使用无菌的含载体蛋白（如0.1% BSA、10% FBS 或5% HSA）的溶液进一步稀释（不低于10ug/mL）后分装保存，-20°C至 -80°C无菌保存3到6个月。无血清实验需求时，可更换为 5%海藻糖溶液作为载体。避免反复冻融。

WB= Western Blot; IP= Immunoprecipitation; IF= Immunofluorescence; IHC= Immunohistochemistry;  
 FACS= Fluorescence activated Cell Sorting; FA= Functional Assay